

# Commonwealth Wind Community Scale Program: Support for Project Development

Martha Broad, MassCEC  
[www.masscec.com](http://www.masscec.com)

# Overview

## Commonwealth Wind Community Scale:

- Program Goals
- Support We Provide
- How to Apply for Support
- Challenges
- Opportunities

# MassCEC

Idea      Research      Development      Manufacturing      Project/Installation



**Clean Energy Sector Development**

**Investments in Clean Technology**

**Renewable Energy Generation: Wind, Solar, Hydro, LFG**

**Workforce Development**

# Commonwealth Wind Program

Commercial:

>2MW

Feasibility Grants and  
Development Loans

Serve ISO-NE  
Wholesale Market

**Community  
Scale:**

**100kW to 2MW\***

**Site Assessments,  
Feasibility and  
Design/Construction  
Grants**

**\*Public projects cap  
=10MW**

Micro:

Up to 100kW

Construction  
Capacity/Production  
Rebates

# Community Scale Program Goals

Support the BEST projects to help achieve the Governor's goal:

2000 MW wind by 2020 (25% or 500 MW land-based)

“BEST”?

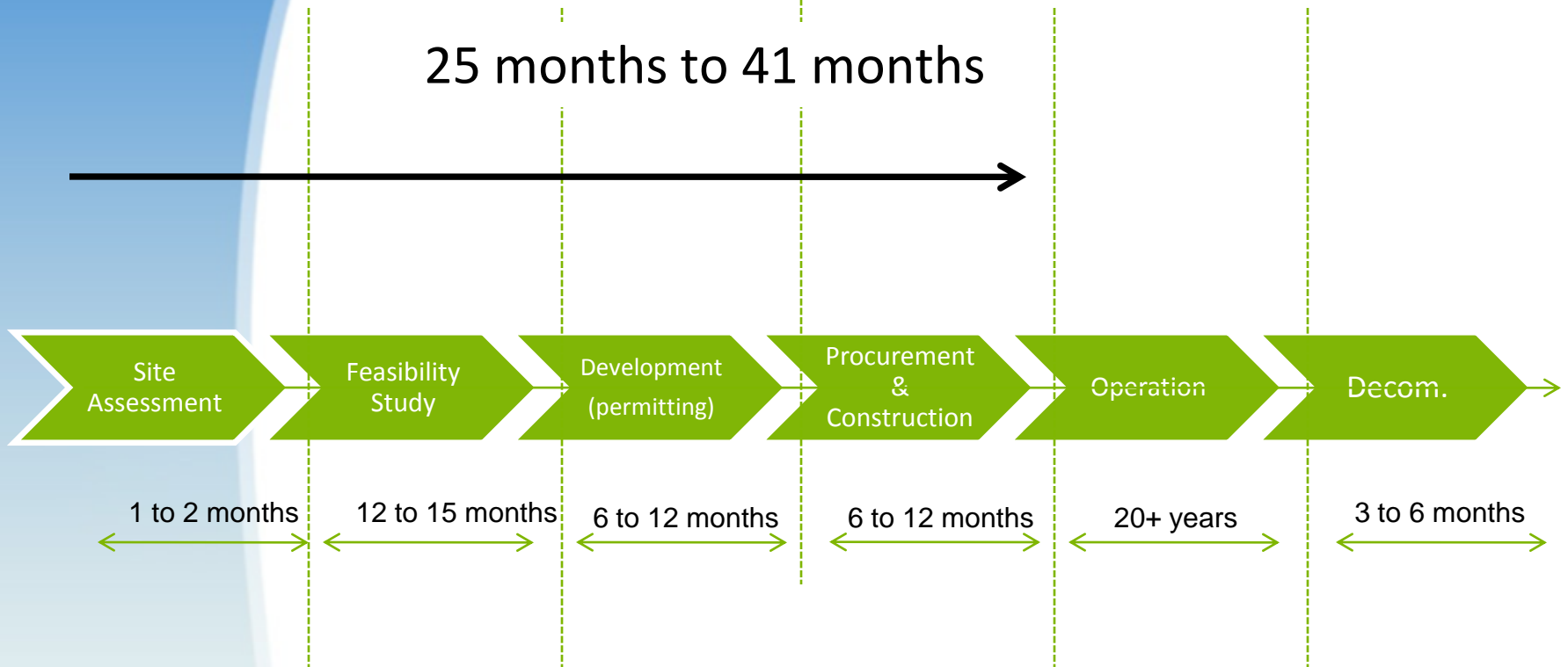
- Responsibly-sited
- Cost-effective (MassCEC \$/kWh)
- Realistic and timely development schedules

# MassCEC Project Support

- Competitive grant program approx. 3x a year
- Grant Amounts:
  - \$20K to \$85K for Feasibility
  - \$100K to \$400K for D&C
- \$9 million awarded over past two years
- Information clearinghouse
- List of wind consultants (NOT pre-qualified by MassCEC)
- Database of projects

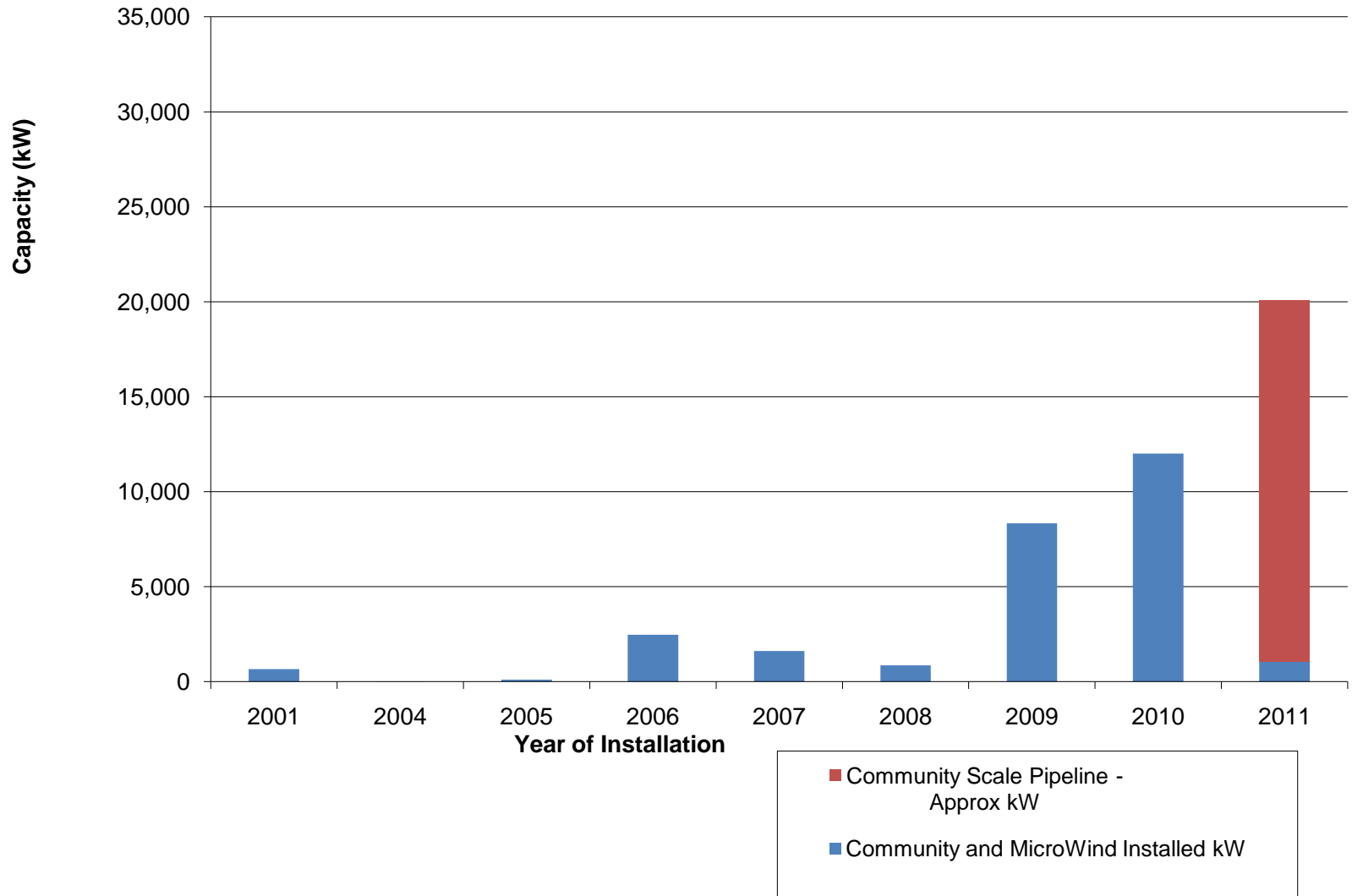
# Wind Development Process

25 months to 41 months

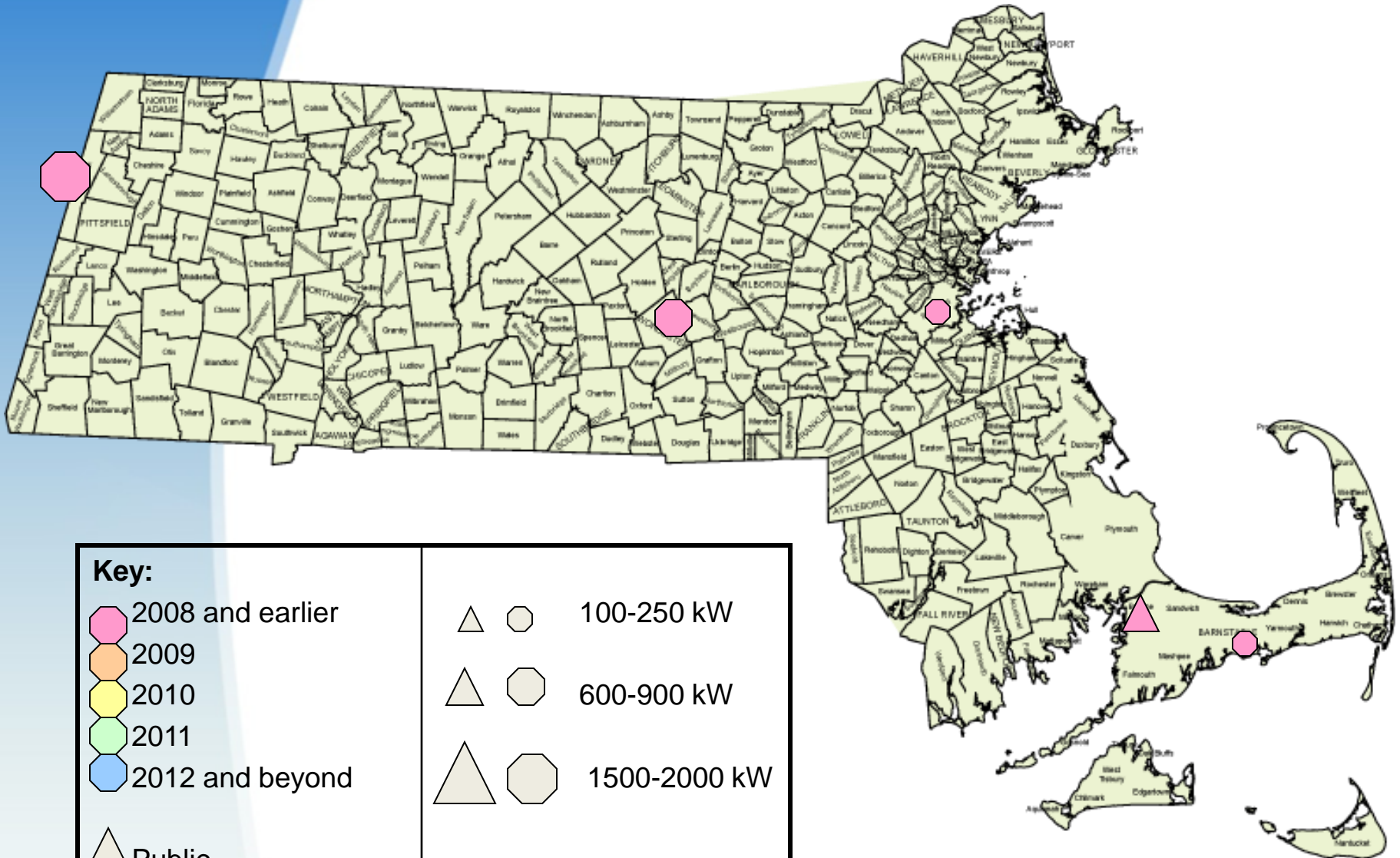


NOTE: Steps and duration vary according to project size

## Community Scale and Micro Wind Installed and Projected Wind Capacity Thru 2011

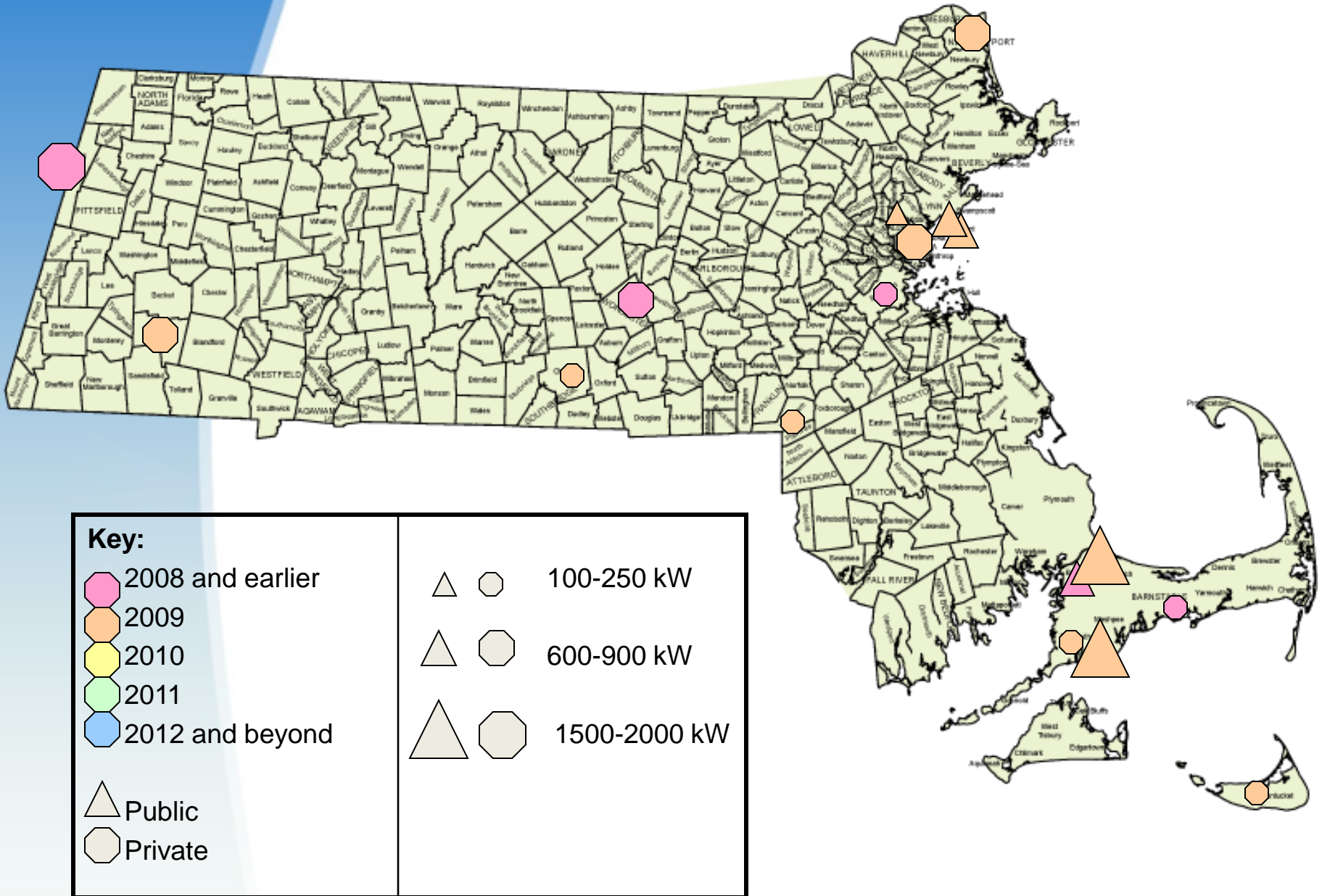


# Community Scale Installed through 2008

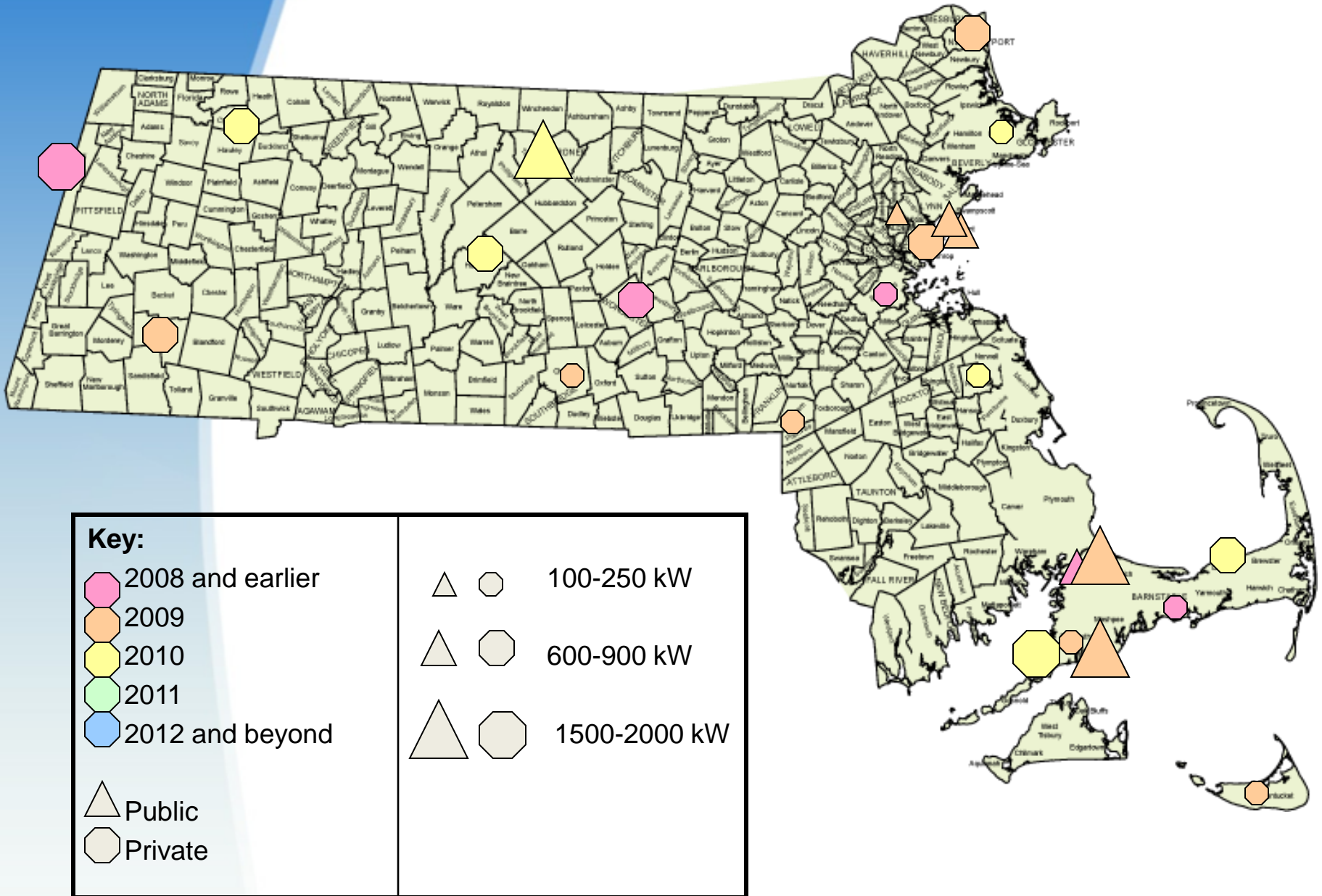


Key:	
	2008 and earlier
	2009
	2010
	2011
	2012 and beyond
	Public
	Private
	100-250 kW
	600-900 kW
	1500-2000 kW

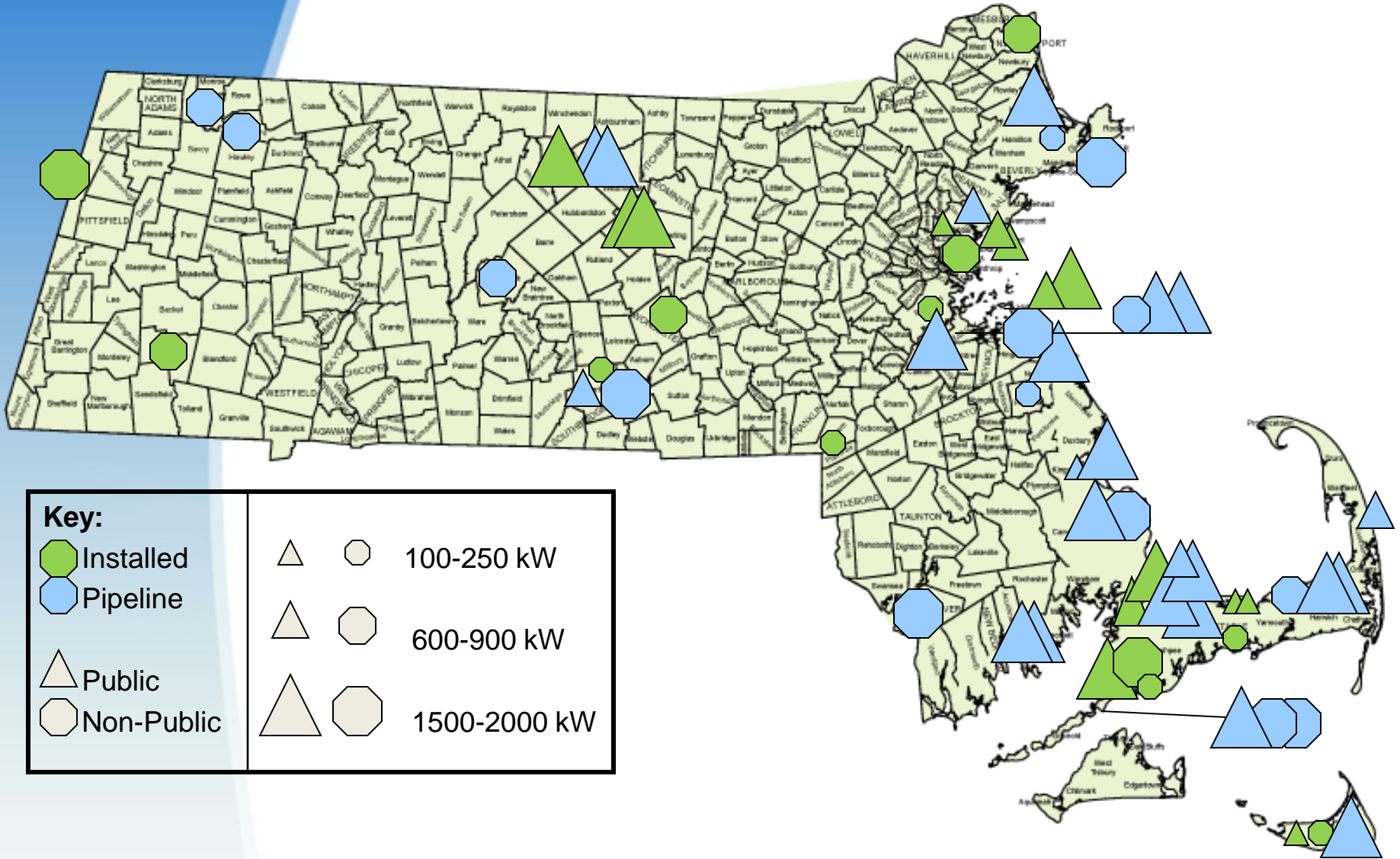
# Community Scale Installed through 2009



# Community Scale Installed through 2010



# Community Scale Installed and Pipeline Wind Projects



# 2007: Large Onsite Wind



**Jiminy Peak**  
**GE 1,500 kW**

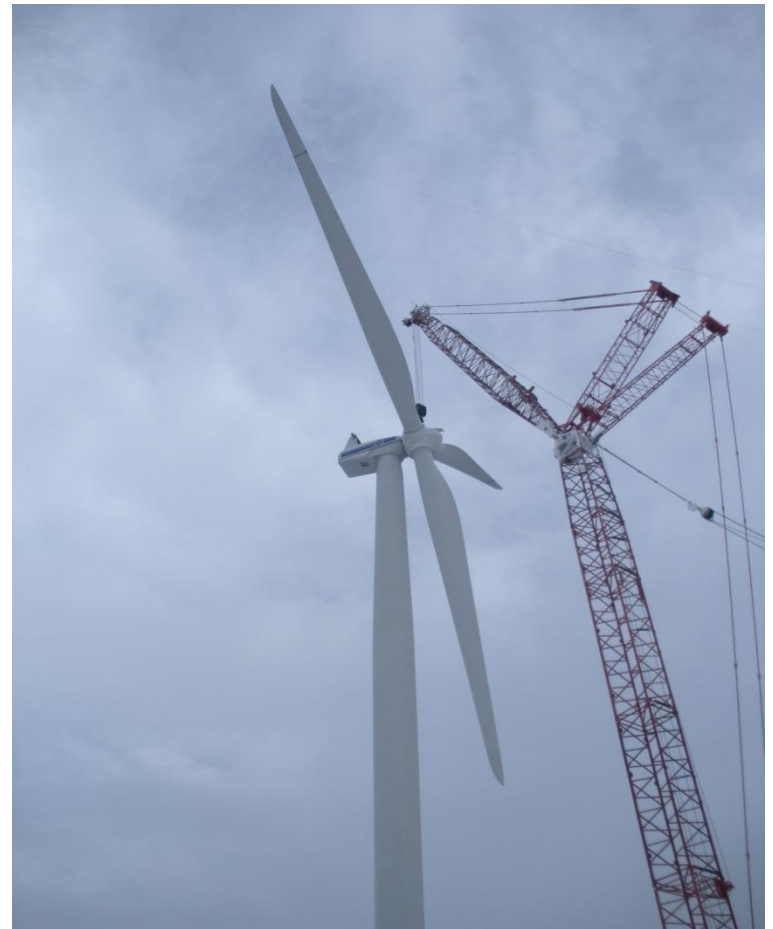
# 2008: Large Onsite Wind

**Holy Name High School,  
Worcester RRB 600 kW**



# 2010: Large Onsite Wind

**Dept. of Corrections, Gardner MA**  
**Two 1.65 MW Vestas V82s**





# What Makes a Strong Grant Application?

# Feasibility Applications

- Wind speed => 6 m/s @ 70m)
- Technical consultants are experienced
- Applicant shows commitment
- Team has started public outreach
- No obvious permitting challenges
- Complies w/ local zoning

# Design and Construction Applications

- Experienced team
- Public outreach is a priority
- Wind resource analysis: thorough and clear
- Detailed acoustic and flicker studies
- Possible sources of financing identified

# Challenges

- Permitting
  - Maintain focus on science-based analysis :
    - acoustics
    - flicker
    - property values
- Perseverance
- Potential off-takers
- Policy Implementation is in process

# Opportunities

- New site owner/project owner models
- Net metering economics
- Number of participants growing
- Political leadership
- Carbon and pollution reduction

# Questions?

Martha Broad

Senior Project Manager

617 315 9312

[mbroad@masscec.com](mailto:mbroad@masscec.com)



